

INSTALLATION INSTRUCTIONS

TARAFLEX SPORT FLOORING

These instructions are specifically written for the installation of the following products:

Product	Width	Thickness	Installation direction	Seams welded
Taraflex Multi-Use 6.2	Approximately 4' 11"	6.2 mm	Same	CR 50
Taraflex Sport M Plus	Approximately 4' 11"	7.5 mm	Same	CR 50
Taraflex Sport M Performance	Approximately 4' 11"	9 mm	Same	CR 50
Taraflex Badminton	Approximately 4' 11"	4.5 mm	same	CR 50
Taraflex Table Tennis	Approximately 4' 11"	4.5 mm	same	CR 50
Taraflex Tennis	Approximately 4' 11"	6.2 mm	same	CR 50
Taraflex Futsal	Approximately 4' 11"	6.2 mm	same	CR 50

Important Note: Before installing, refer to Gerflor Canada Installation Handbook for acclimation, job site conditions, subfloor prep, and other general installation recommendations.

1. GENERAL INFORMATION

- 1.1. Gerflor Taraflex products are formulated to withstand high moisture conditions. To perform as designed, the concrete should be properly prepared to create a contaminant free and porous substrate.
- 1.2. Gerflor Taraflex products are not designed to withstand hydrostatic or osmotic pressure.
- 1.3. *The guidelines offered within this document are not intended to be all inclusive. Only qualified, professional flooring technicians experienced in the field of resilient flooring should proceed with this installation system.*
- 1.4. It is recommended to mechanically prepare the concrete via grinding or bead blasting the surface to achieve a CSP 1, clean and porous substrate.
- 1.5. Moisture and pH testing must be performed in accordance with ASTM F710-17.
- 1.6. Adhesive bond tests are recommended to ensure adequate bonding to the substrate.
- 1.7. Do not install material that has visible defects or damage. A contractor that installs material that has visible defects or damage assumes responsibility for the damaged material.

2. DRY LAY OF SHEET GOOD

NOTE: Taraflex is recommended to be installed with *random* side seams. Due to slight stretching from being rolled, we do not guarantee a perfect side or end pattern match if attempted.

- 2.1. For areas where bleachers will be used, please refer to the **Gerflor BleacherBlok Installation Instructions**.
- 2.2. Mark the centre starting line.
- 2.3. Follow roll sequence numbers.
- 2.4. Unroll the first length of material along this chalk line and then work progressively outward, leaving a 1/4" gap between the sheets and allow the material to relax for at least 16-24 hours.
- 2.5. Seaming should be kept to a minimum and avoid cross seams as much as possible. Place seams in locations where game lines go if possible.

INSTALLATION INSTRUCTIONS

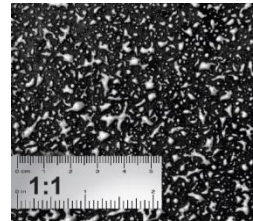
TARAFLEX SPORT FLOORING

3. INSTALLING TARAFLEX SHEETGOODS

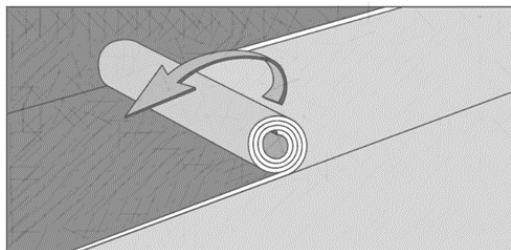
- 3.1. Reposition sheets to allow for no more than a $\frac{1}{32}$ " gap between them to allow for proper heat welding. **Wider gaps will compromise the integrity of the weld.**
- 3.2. In most cases, factory edges can be used for side seams. Sheets that may have minor edge damage or distortion must be trimmed and removed prior to installation of the sheets.
- 3.3. Leave material 4"-6" longer on each end for trimming after placement. *Do not net cut material to the final trim until the application of the adhesive.*
- 3.4. Before applying the adhesive, ensure the gap between the sheets to a uniform $\frac{1}{32}$ " along the entire length. Overlap edges and trace cut if necessary, to achieve consistent seam gap. This gap will act as a guide for the groover when preparing to heat weld.

4. INSTALLING USING GERFIX SPRAY ADHESIVE

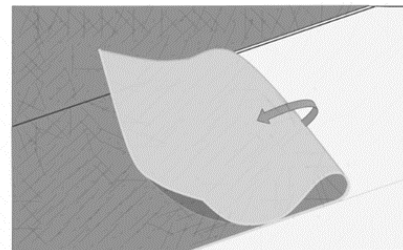
- 4.1. Always refer to the **Gerfix Spray Adhesive Technical Data Sheet**
- 4.2. Recommended spray pattern: (150 to 185 sq. ft. per can)
- 4.3. Ensure substrate, flooring, and surrounding areas are clean and dust free.
- 4.4. Wipe hand across the surface to verify for dust.
- 4.5. If dust transfers, substrate is not clean.
- 4.6. Damp-mop substrate if dust is present.
- 4.7. Protect from overspray with a spray shield, drop cloths, paper, or masking tape.
- 4.8. Starting from the centre line and working outward, the sheets (width) halfway and apply the adhesive to the subfloor.
- 4.9. Never pre-cut material to final trim until it is applied into the adhesive. Leave material 2"-3" longer for trimming after placement.



Roll back method



Fold back method



- 4.10. Shake aerosol can well. Remove white cap.
- 4.11. To ensure uniform adhesion of the entire surface, spray a workable amount of adhesive at once.
- 4.12. Stand straight up to spray. Hold can upside down, approximately 20-30 inches horizontally from the substrate, aim at floor and press tip with a finger.
- 4.13. Walk right to left smoothly to achieve results as seen on photo.



INSTALLATION INSTRUCTIONS

TARAFLEX SPORT FLOORING

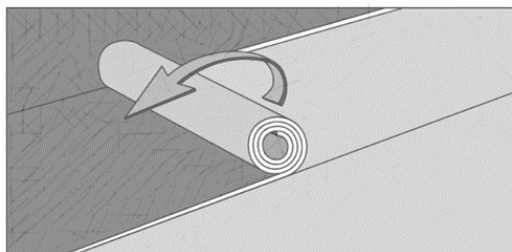
- 4.14. Adhesive should spray out in a wide mist and fall like snow.
- 4.15. Spraying in a sweeping motion may result in an inconsistent spray pattern.
- 4.16. Excess buildup or inconsistent spray pattern on the substrate may cause telegraphing.
- 4.17. Avoid extremely heavy application.
- 4.18. To ensure optimal spray pattern, remove any adhesive build up that may occur during the application process.
- 4.19. If overspray occurs, it may be removed with a damp cloth while the adhesive is still wet.
- 4.20. Once the adhesive is dry to the touch, immediately install the flooring. While open, ensure that adhesive is not contaminated by dust
- 4.21. Roll flooring with a 3 section 100-lbs roller within 1 hour after installation to complete the bonding process.
- 4.22. Always roll seams, at the walls, and under toe kicks with a hand roller to ensure 100% transfer of adhesive.
- 4.23. Flooring may be heat-welded 1 hour after installation.
- 4.24. Continue laying sheets by keeping the edges spaced 1/32", trimming each side with a straight edge or scribing when needed. The goal is to produce a uniform 1/32" spaced seam for welding.
- 4.25. The width of the gap has to be even and may be less than 1/32" depending on the guide of the groover used.
- 4.26. During the installation, always double-check the flooring for bubbles with the lights on and off.
- 4.27. **The floor is open to all traffic immediately after installation.**



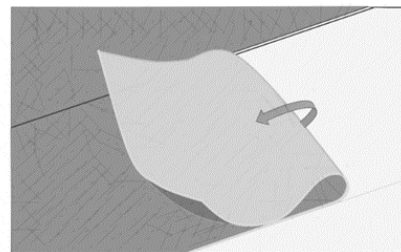
5. INSTALLING USING GERFIX TPS+ ACRYLIC ADHESIVE

- 5.1. Always refer to the **Gerfix TPS+ Adhesive Technical data Sheet**
- 5.2. Recommended trowel size is 1/32" x 1/16" x 1/32", covering from 170 to 220 sq. ft. per US gallon.
- 5.3. Starting from the centre line and working outward, fold back or roll back the sheets (width) halfway and apply the adhesive to the subfloor.

Roll back method



Fold back method



INSTALLATION INSTRUCTIONS

TARAFLEX SPORT FLOORING

- 5.4. Never pre-cut material to final trim until it is applied into the adhesive. Leave material 2"-3" longer for trimming after placement.
- 5.5. To ensure uniform adhesion of the entire surface, apply a workable amount of adhesive at once.
- 5.6. Maintain a uniform spread rate. Replace trowel (or trowel blade) with every pail used.
- 5.7. Immediately after trowelling the adhesive onto the concrete use a medium-napped paint roller saturated with adhesive to flatten out visible trowel marks and even out the adhesive. **A double arm roller frame is recommended to ensure an even coat of adhesive.**
- 5.8. Once the adhesive is applied, fold back or roll back the flooring into the still wet adhesive for 4"-6". This will ease the fold back or roll back of the second half and it will help avoid an overlap of the glue line. **Should this method not be followed, the glue-line mark will telegraph through the flooring.**
- 5.9. "Open time" of the adhesive is dependent upon porosity of the substrate, temperature, and humidity. It is important that the installers familiarize themselves with the adhesive before starting the installations.

<i>Application Characteristics over Porous Substrates (Non-Porous-see note below)</i>		
	<i>Open Time*</i>	<i>Working Time**</i>
Gerflor Taraflex Products	20 to 40 minutes (to reach a tacky state***)	Up to 1.5 hours

* **Open Time:** is the waiting time required before installing flooring.

** **Working time:** is the window of time for the adhesive to accept flooring.

*** **Tacky:** When adhesive starts to become translucent and there is light transfer to the fingers when slightly touched

Note: For Non-Porous substrates such as metal or existing flooring, let the adhesive dry completely, with NO transfer to the fingers when touched, then immediately install the flooring and roll with a 100lb. roller.


- 5.10. When installing, always work to have complete sheets glued at the end of the day.
- 5.11. To reduce the risk of bubbles, the roll back method is the most recommended method of installation.
- 5.12. By keeping the roll tight and maintaining constant pressure while unrolling into the adhesive, the risk for bubbles will be minimal.
- 5.13. The fold back method is acceptable, but care must be taken not to unfold it back too quickly.
- 5.14. Periodically, lift the edge of the sheet to confirm transfer to the back of the flooring.
- 5.15. Once flooring is placed into the adhesive, immediately roll thoroughly with a 3 section 100-lbs roller in both directions.
- 5.16. Always roll seams, at the walls, and under toe kicks with a hand roller to ensure 100% transfer of adhesive.
- 5.17. Continue laying sheets by keeping the edges spaced 1/32", trimming each side with a straight edge or scribing when needed. The goal is to produce a uniform 1/32" spaced seam for welding.

INSTALLATION INSTRUCTIONS

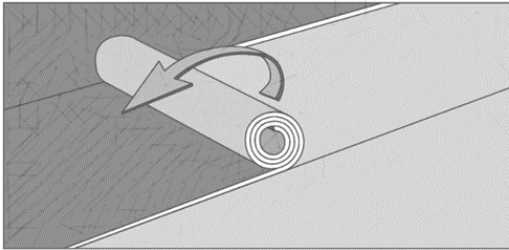
TARAFLEX SPORT FLOORING

- 5.18. The width of the gap has to be even and may be less than 1/32" depending on the guide of the groover used.
- 5.19. During the installation, with the lights on and off, always double-check the flooring for bubbles with portable, ambient, and/or fixed lighting.
- 5.20. **Avoid adhesive displacement by prohibiting traffic for a period of 24 hours and 72 hours for rolling loads.**

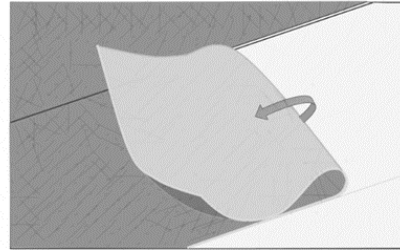
6. INSTALLING USING GERFIX 100 ADHESIVE

- 6.1. Always refer to the **Gerfix 100 Adhesive Technical Data Sheet**.
- 6.2. Follow the guidelines indicated on the Technical Data Sheet.
- 6.3. Recommended trowel size is 1/32" x 1/16" x 1/32" "U" notch, covering from 170 - 220 sq. ft. per US gallon. 
- 6.4. Starting from the centre line and working outward, fold back or roll back the sheets (width) halfway and apply the adhesive to the subfloor.

Roll back method



Fold back method



- 6.5. To ensure uniform adhesion of the entire surface, apply a workable amount of adhesive at once.
- 6.6. Maintain a uniform spread rate. Replace trowel (or trowel blade) with every pail used.

<i>Application Characteristics over Porous Substrates "ONLY"</i>		
	<i>Open Time*</i>	<i>Working Time**</i>
Gerflor Taraflex Products	No Open Time	Up to 45 minutes

* **Open Time:** is the waiting time required before installing flooring.

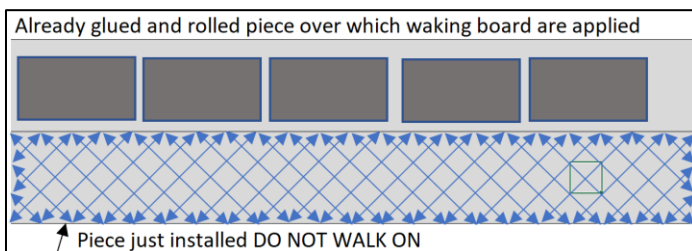
** **Working time:** is the window of time for the adhesive to accept flooring.

- 6.7. Maintain a uniform spread rate. Replace trowel (or trowel blade) with every pail used.
- 6.8. When installing, always work to have complete sheets glued at the end of the day.
- 6.9. To reduce the risk of bubbles, the roll back method is the most recommended method of installation.
- 6.10. By keeping the roll tight and maintaining constant pressure while unrolling into the adhesive, the risk for bubbles will be minimal.
- 6.11. The fold back method is acceptable, but care must be taken not to unfold it back too quickly.

INSTALLATION INSTRUCTIONS

TARAFLEX SPORT FLOORING

- 6.12. Periodically, lift the edge of the sheet to confirm 100% transfer of adhesive to the back of the flooring.
- 6.13. Once flooring is placed into the adhesive, immediately roll thoroughly with a 3 section 100-lbs steel roller in both directions.
- 6.14. The **use of kneeling boards is mandatory** when working on top of freshly installed flooring
- 6.15. Always roll seams, at the walls, and under toe kicks with a hand roller to ensure **100% transfer of adhesive**.
- 6.16. **It may be necessary to weight down end seams, and/or wall cuts until the adhesive has cured. The use of clean, flat materials is recommended.**
- 6.17. Care must be taken to avoid flopping the sheets into the adhesive as this may cause air to become entrapped
- 6.18. Keep on installing sheets by keeping the edges spaced 1/32", trimming each side with a straight edge or scribing. The goal is to produce a uniform 1/32" spaced seam for welding.
- 6.19. Using a 100-lbs sectional steel roller, roll the flooring in the width first and then the length to ensure adhesive transfer and to evacuate all air that can lead to bubbles. Optimally there should be an individual tasked solely with this responsibility.
- 6.20. Continually check the flooring for bubbles. To verify there are no bubbles, look down and across the flooring from both standing and prone position with the lights on and off. The use of a light source at floor level can be helpful in finding any air pockets or bubbles.
- 6.21. Use mineral spirits to remove fresh adhesive from the surface of the flooring
- 6.22. **Avoid adhesive displacement by prohibiting traffic for a period of 6 hours for light traffic, and 8 hours for heavy static & dynamic loads.**
- 6.23. Following the above steps are of the utmost importance for a successful installation that will resist high moisture levels and be serviceable over the life of the floor.



7. **HEAT WELDING - REFER TO "HEAT WELDING GERFLOR VINYL PRODUCTS" INSTRUCTIONS**
8. **GAME LINE PAINTING – REFER TO "GAME LINE PAINTING" INSTRUCTIONS**
9. **BLEACHERBLOK – REFER TO SV BLEACHERBLOK" INSTRUCTIONS**
10. **ONCE THE INSTALLATION IS COMPLETED**
 - 10.1. Perform a visual inspection of the project.
 - 10.2. Verify every welded seam.
 - 10.3. Repair every imperfection before leaving the project.
 - 10.4. Make sure that every vertical obstacle such as doorframes is well trimmed and sealed with an acrylic, silicone, or equivalent sealant product.
 - 10.5. To maximize the aesthetic appearance and serviceability of the newly installed flooring, provide your customer with a copy of the **Gerflor Maintenance Instructions**.